

ECO-BIN

▼ Eco Rigid Series

Bulk Container

APPLICATIONS

- Economical warehouse and general use bin
- 4 way forklift and Pallet jack access and stacking enabling efficient handling in limited spaces
- Comes in vented and non-vented
- Versatile solution to handle all types of cargo across a broad range of industries



Reduce, Reuse
& Recycle

Stackable | 4-Way Entry | Interlocking Feet

www.ecopallets.com.au

www.ecopallets.co.nz

SPECIFICATIONS

Size
External: 1200 x 1000 x 760mm (+/- 5mm)
Internal: 1110 x 910 x 600mm (+/- 5mm)

Material
Polypropylene

Volume Capacity
600L

Type
Rigid Bulk

Weight
33 kg

Colour
Grey*



Temperature Range
-20 °C /-40 °C

Optional Extras
Lid, Wheels

*Static
4000 kg

*Dynamic
1000 kg

*Beam Racking
800 kg

Accessible by
4 way fork lift 
4 way pallet jack 

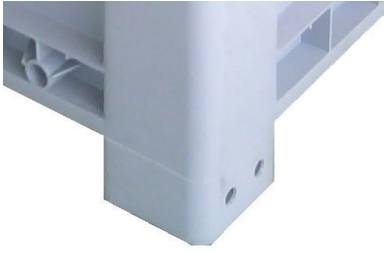
*Based on Uniform Distributed Load (UDL)

*Other colours available upon request

COMPLIANCE

Compliant to requirements of **ISO9001 & ISO14001**

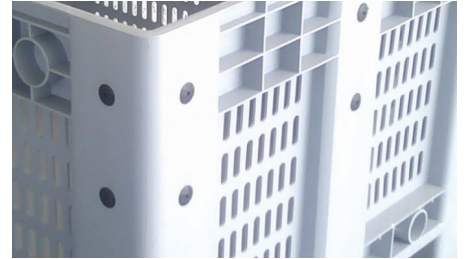
FEATURES



Interlocking feet



UV rated for up to 5 years



Vented for airflow

PHOTOS

ECO-BIN



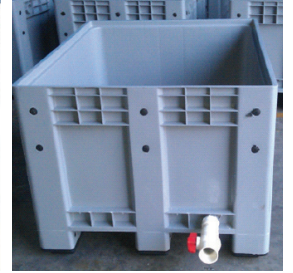
Vented



Non-Vented

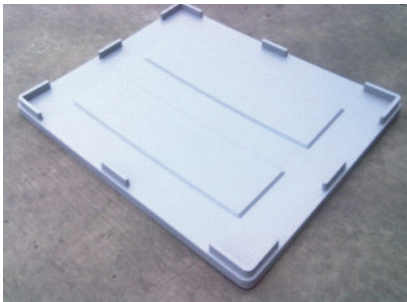


Bottom View



Side View

Optional Extras

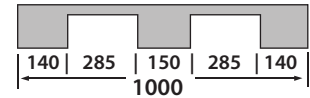
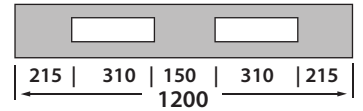


Lid



Wheels

Product Dimensions



Forklift Entry Dimensions

Perth Head Office

15 Ashby Cl
 Forrestfield WA 6058

+618 9353 3113
 sales@ecopallets.com.au

Sydney Warehouse 1

Gate 1/11-21 Forge Street
 Blacktown NSW 2148

+612 9601 6115
 sales@ecopallets.com.au

Sydney Warehouse 2

Dock 10/56 Jones St,
 Pendle Hill NSW 2145

+612 9601 6115
 sales@ecopallets.com.au

Melbourne Warehouse

21 Jets Court
 Melbourne Airport 3045

+613 9338 1331
 sales@ecopallets.com.au

Brisbane Warehouse

Shed 3.1 221 Gooderham
 Road Willawong QLD 4110

+617 3275 2665
 sales@ecopallets.com.au

New Zealand Warehouse

107 McLaughlins Road
 Wiri Auckland 2104

+64 9 887 0297
 sales@ecopallets.com.au